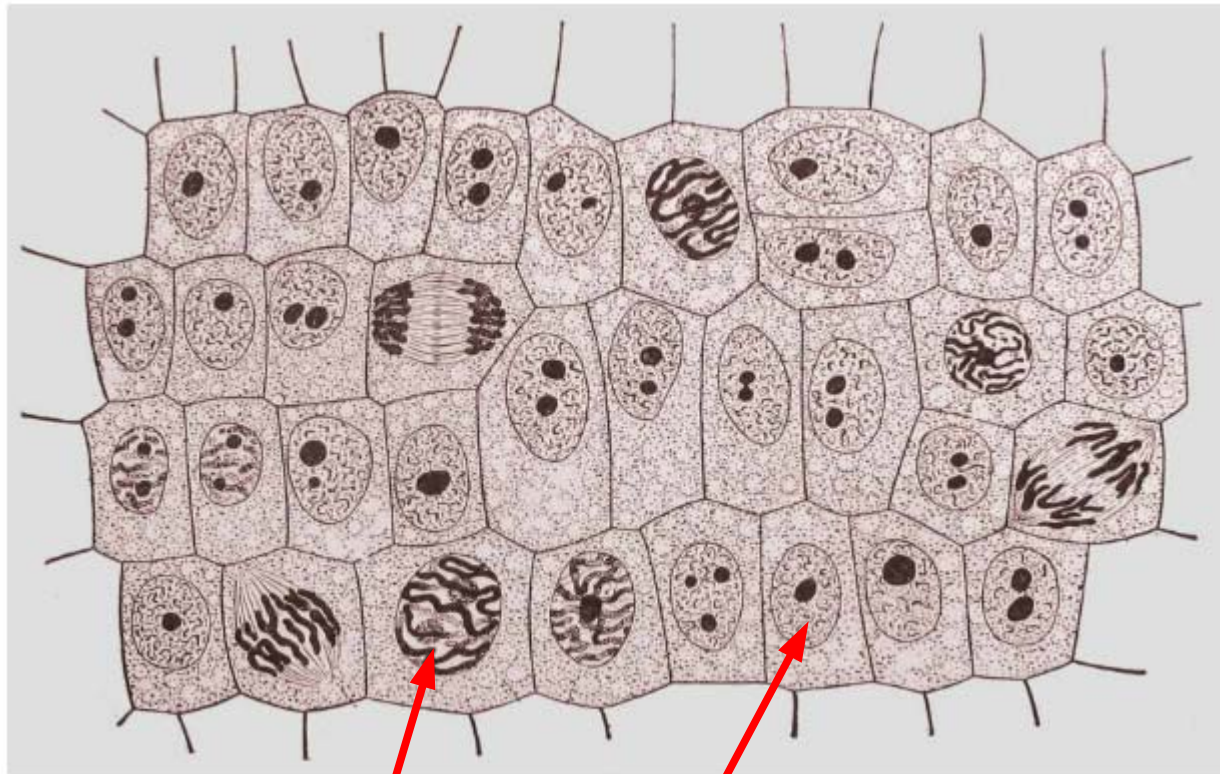


Science 9M Cell Division (Mitosis) Worksheet

Using your textbook (page 10) as a reference, identify the stages of mitosis shown by the onion cells shown in the picture below. Two examples are shown for you.

Stages: Prophase, Metaphase, Anaphase, Telophase, Cytokinesis (also note cells not undergoing cell division)



Prophase

not undergoing cell division (interphase?)

From: <http://www.neok12.com/slide-puzzle/Cell-Division-02.htm> (This is a longitudinal section of onion cells magnified 800×)